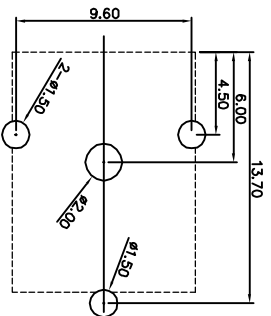
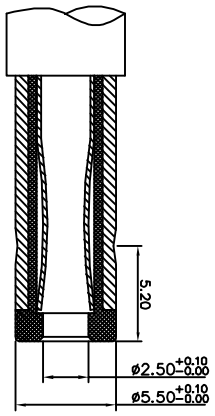
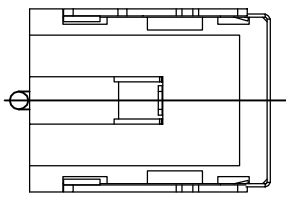


P. C. B LAYOUT



- SPECIFICATION**
1. Rating : DC 12V 5A;
 2. Contact resistance: $\leq 0.03 \Omega$;
 3. Insulation resistance: $\geq 100M \Omega$ (DC250V) ;
 4. Withstand voltage: 500VAC ;
 5. Insertion and extraction force: 5~40N;
 6. Life test: 5,000 cycles.



MATING PLUG

NO.	DESCRIPTION	QTY	MATERIAL	PLATING
6	STOPPER	1	LCP	BLACK
5	SHELL	1	SPCC 0.4t	NI600" OVER GA800"
4	CONTACT FOOT	1	SUS301 0.15t	N/A
3	PIN	1	BRASS	NI500"
2	SPRING PLECE	1	BRONZE 0.3t	Sn600" OVER NI500"
1	HOUSING	1	LCP	BLACK

CSCONN

CSCONN PRECISE ELECTRONICS CO.,LTD

UNITS: mm	PART NO. (INTENDED USE)	TITLE: DC JACK
GENERAL TOLERANCE	CDC00037	DWG NO. DC JACK
X. ±5° 0.X±0.3	APPD:	SCALE
X.1±2° 0.XX±0.2	CHKD: Sk11a	1:1
XX. ±1° 0.XXX±0.1	DR: Kitty	SHEET
XXX. ±0.5°		1 OF 1



SCALE SHEET REV
1:1 1 OF 1 A