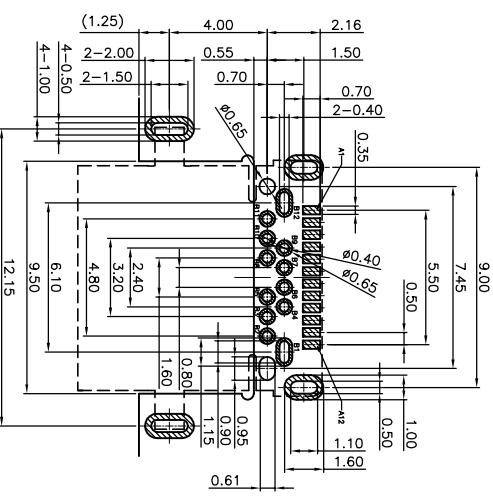
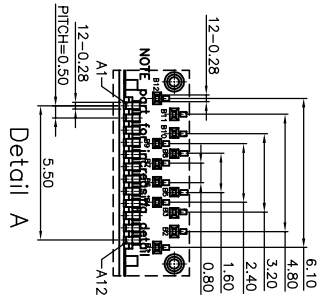
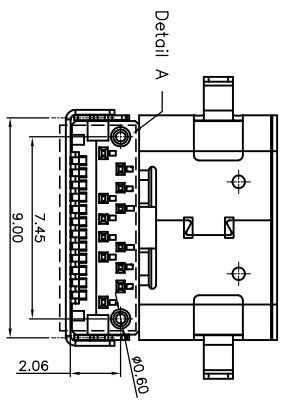
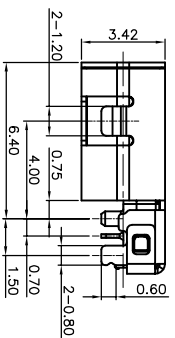
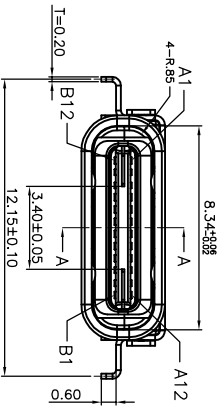


SECTION A-A

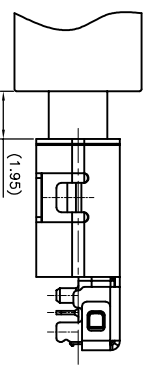


RECOMMEND PCB LAYOUT (COMPONENT SIDE)
TOLERANCE FOR PCB LAYOUT IS ± 0.05
KEEP OUT AREA



Pin	Signal Name	Mating Sequence	Pin	Signal Name	Mating Sequence
A1	GND	First	B12	GND	First
A2	SSTXp1	Second	B11	SSRXp1	Second
A3	SSTXn1	Second	B10	SSRXn1	Second
A4	Vas	First	B9	Vas	First
A5	CC1	Second	B8	SHU2	Second
A6	Dp1	Second	B7	Dn2	Second
A7	Dn1	Second	B6	Dp2	Second
A8	SHU1	Second	B5	CC2	Second
A9	Vas	First	B4	Vas	First
A10	SSRXn2	Second	B3	SSTXn2	Second
A11	SSRXp2	Second	B2	SSTXp2	Second
A12	GND	First	B1	GND	First
SHELL		GND	SHELL		GND

- NOTE:
1. MATERIAL:
 - 1.1 INSULATOR: HIGH TEMPERATURE PLASTIC UL 94 V-0;
 - 1.2 CONTACT: COPPER ALLOY(T=0.15mm)
 - 1.3 SHELL: STAINLESS STEEL(T=0.20mm)
 2. ELECTRICAL CHARACTERISTICS:
 - 2.1 CONTACT RESISTANCE: 40mΩ Max FOR INITIAL, 10mΩ CHANGE AFTER TEST, MEASURE AT 20mV, 100mA.
 - 2.2 CONTACT CURRENT RATING: 5A FOR Vas PIN; 1.25A FOR Vdnn PIN.
 - 2.3 DIELECTRIC WITHSTANDING VOLTAGE: 100V AC R.M.S.
 - 2.4 INSULATION RESISTANCE: 100MΩ Min
 - 2.5 OPERATING TEMPERATURE: -40°C ~ 85°C
 3. MECHANICAL CHARACTERISTICS:
 - 3.1 MATING FORCE: 5~20 N
 - 3.2 UNMATED FORCE: 8~20N
 - 3.3 DURABILITY: 10,000 Cycles
 4. PLATING
 - 4.1 TERMINAL CONTACT: (SEE TAB) GOLD PLATING ALL OVER 50μ Min NICKEL AND 800 Min Tin ALL OVER 50μ Min NICKEL ON SOLDER AREA
 - 4.2 SHELL: 500μ Min. NICKEL ALL OVER.



UNITS: mm	CSCONN		CSCONN PRECISE ELECTRONICS CO., LTD	
GENERAL TOLERANCE	PART NO. (INTENDED USE)		TITLE:	
X. ± 5°	CJS31128602004		USB TYPE C FEMALE DIP J-8, 65MM板式	
X. 1±2°	APPD:		DWG NO. USB	
X. ± 1°	CHKD: Skilia		SCALE SHEET	
	DR: Kitty		1 OF 1	
			REV A	