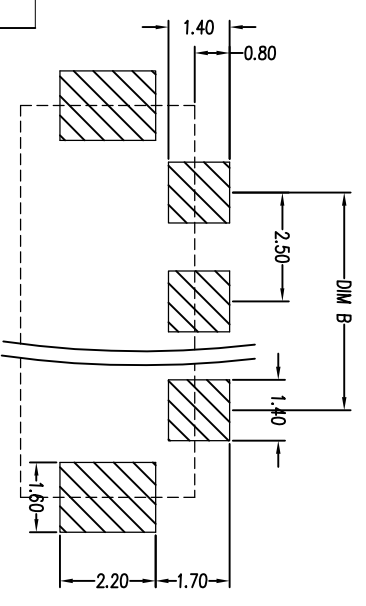
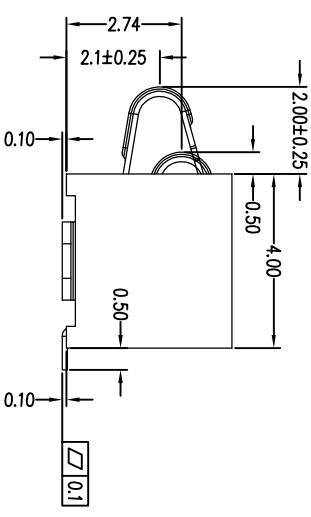
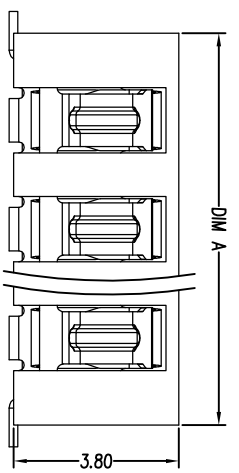
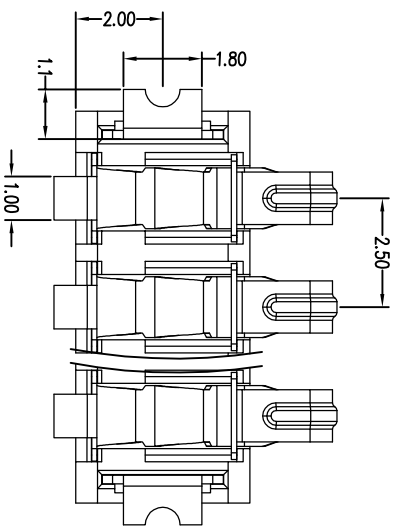


- NOTES:
- ELECTRICAL PERFORMANCES:
 - RATING CURRENT: 2A
 - RATING VOLTAGE: 12 VAC
 - CONTACT RESISTANCE: 30 Ω m
 - INSULATION RESISTANCE: 500 Ω M
 - DIELECTRIC WITHSTANDING VOLTAGE: 500VAC FOR 1 MINUTE
 - MECHANICAL PERFORMANCE:
 - DURABILITY: 3000TIMES
 - NORMAL FORCE AT WORKING POSITION: 80gf Min.
 - OPERATION TEMPERATURE: $-40^{\circ}\text{C} \sim +85^{\circ}\text{C}$.



RECOMMENDED PCB LAYOUT
TDL:(± 0.05)

PART NO.	DIM A	DIM B
CBA2502384002	6.5	2.5
CBA2503384002	9.0	5.0
CBA2504384002	11.5	7.5
CBA2505384002	14.0	10.0
CBA2506384002	16.5	12.5



UNITS: mm		CSCONN		CSCONN PRECISE ELECTRONICS CO.,LTD	
GENERAL TOLERANCE		PART NO. (INTENDED USE)		TITLE: BATTERY 2.5MM 2~6P H=3.8MM	
X. $\pm 5^{\circ}$	0.X ± 0.25	CBA25XXX384002		DWG NO. BATTERY	
X.1 $\pm 2^{\circ}$	0.XX ± 0.2	APPD:		SCALE SHEET REV	
XX. $\pm 1^{\circ}$	0.XXX ± 0.1	CHKD: Skila		1:1 1 OF 1 A	
		DR: Kitty			