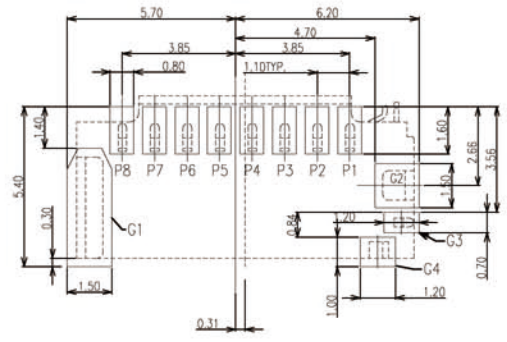
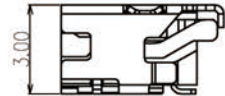
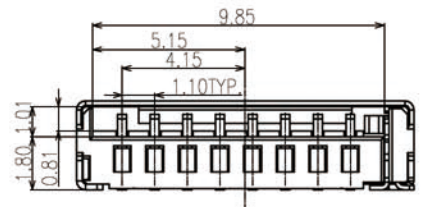


NOTES 1:
 1.0 RATING.
 1.1 VOLTAGE:100 VAC (rms)
 1.2 CURRENT: 0.5 AMPERES MAX. PER CONTACT
 1.3 OPERATION TEMPERATURE RANGE: -25°C~+90°C
 2.0 ELECTRIC CHARACTERISTIC:
 2.1 CONTACT RESISTANCE:100mΩ MAX.
 2.2 INSULATION RESISTANCE: 1000MΩ MIN.
 2.3 DIELECTRIC WITHSTANDING
 VOLTAGE:500V AC FOR 1 MINUTE
 3.0 OPERATION LIFE: 5000 CYCLES
 4.0 MATERIAL/FINISH:SEE TABLE A



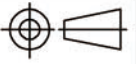
RECOMMENDED PCB LAYOUT
 TOLERANCES ±0.05



P8	DAT1		
P7	DAT0		
P6	VSS		
P5	CLK		
P4	VDD	G4	DET
P3	CMD	G3	POL
P2	CD/DAT3	G2	GND
P1	DAT2	G1	GND
PIN NUMBER	PIN NUMBER	PIN NUMBER	PIN NUMBER

TABLE A:

ITEM	NAME	Q' TY/EACH	MATERIAL/FINISHED	REMARK
5	CONTACT-I	1	COPPER ALLOY MATING AREA Au PLATED	
4	CONTACT-I	1	COPPER ALLOY MATING AREA Au PLATED	
3	SHELL	1	STAINLESS STEEL	
2	CONTACT	8	COPPER ALLOY MATING AREA Au PLATED	
1	HOUSING	1	THERMOPLASTIC UL94V-0, BLACK	

UNITS: mm		CSCONN		CSCONN PRECISE ELECTRONICS CO.,LTD								
GENERAL TOLERANCE		PART NO.(INTENDED USE)		TITLE:								
X.° ±5°	0.X±0.2	CTF08114550300		T-FLASH CARD 短体 H=3.0MM								
X.1±2°	0.XX±0.15	APPD:		DWG NO. T-FLASH CARD								
XX.±1°	0.XXX±0.1	CHKD: Skila		 <table border="1"> <tr> <td>SCALE</td> <td>SHEET</td> <td>REV</td> </tr> <tr> <td>1:1</td> <td>1 OF 1</td> <td>A</td> </tr> </table>			SCALE	SHEET	REV	1:1	1 OF 1	A
SCALE	SHEET	REV										
1:1	1 OF 1	A										
		DR: Kitty										